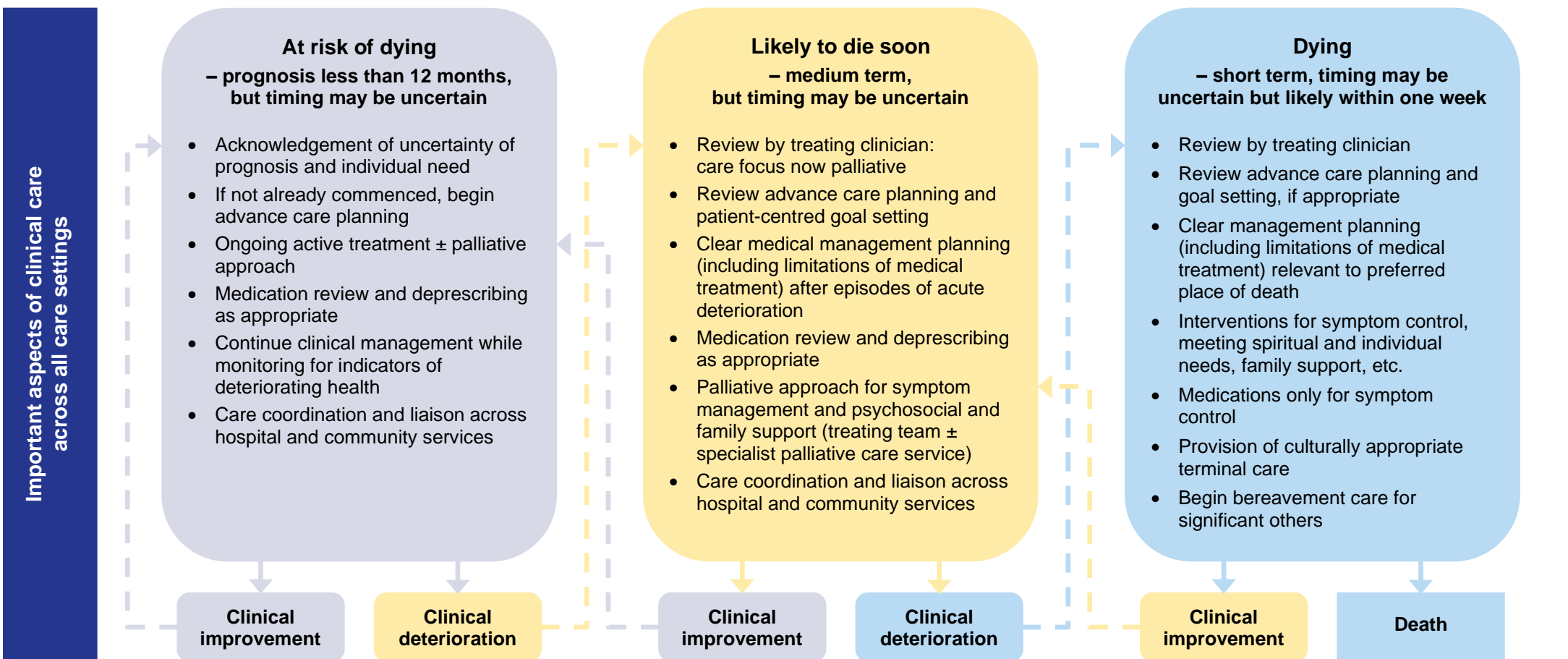
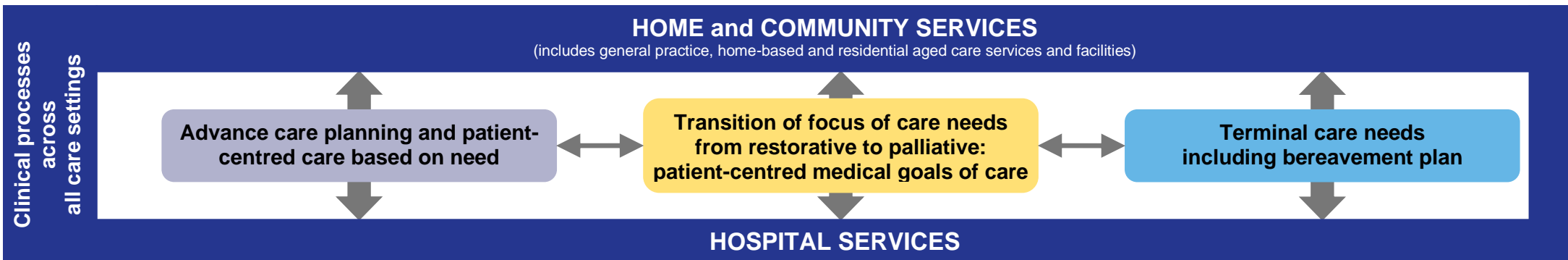


PALLIATIVE and END-OF-LIFE CARE FRAMEWORK – LAST 12 MONTHS OF LIFE



Adapted from: 1. Australian Commission on Safety and Quality in Health Care. National Consensus Statement: essential elements for safe and high-quality end of life care. Sydney: ACSQHC, 2015
 2. Alfred Health. Guideline End of Life Care Management. Alfred Health Prompt Doc No: AHG0001555 v1.0, February 2015
 3. Reymond L et al. End-of-life care: Proactive clinical management of older Australians in the community. AFP 2016; 45(1-2)